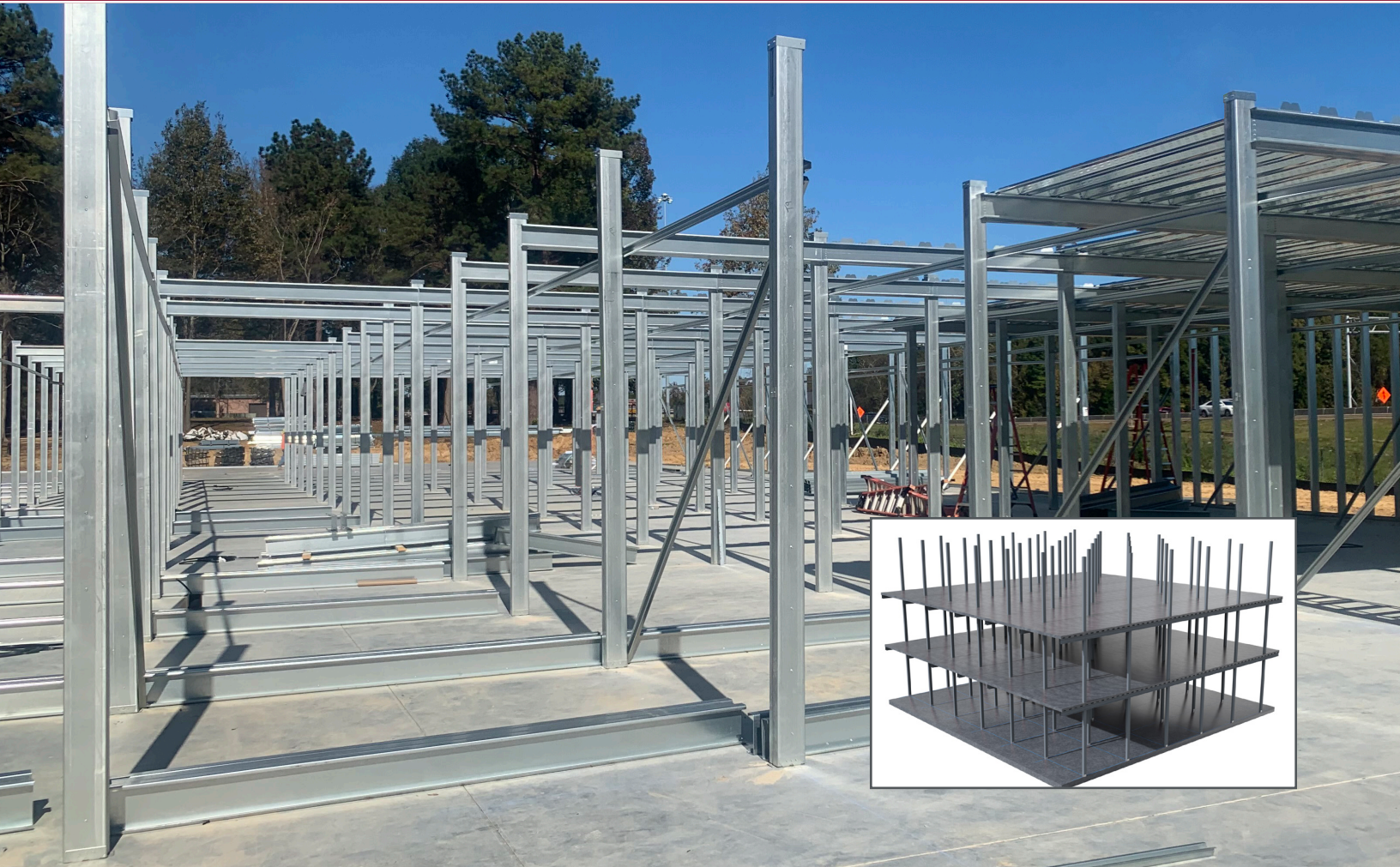


ALPHA FRAMING SYSTEM



CLEANER
FASTER
STRONGER



CLEANER

No Stains, No Spills & Less Dust

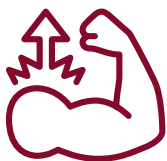
- No concrete staining or spillage on partitions
- No bottom track to collect dust or debris – eliminating ongoing cleaning
- Galvanized spangle finish protects columns and beams from rust and corrosion during construction



FASTER

Frame up to 3x faster

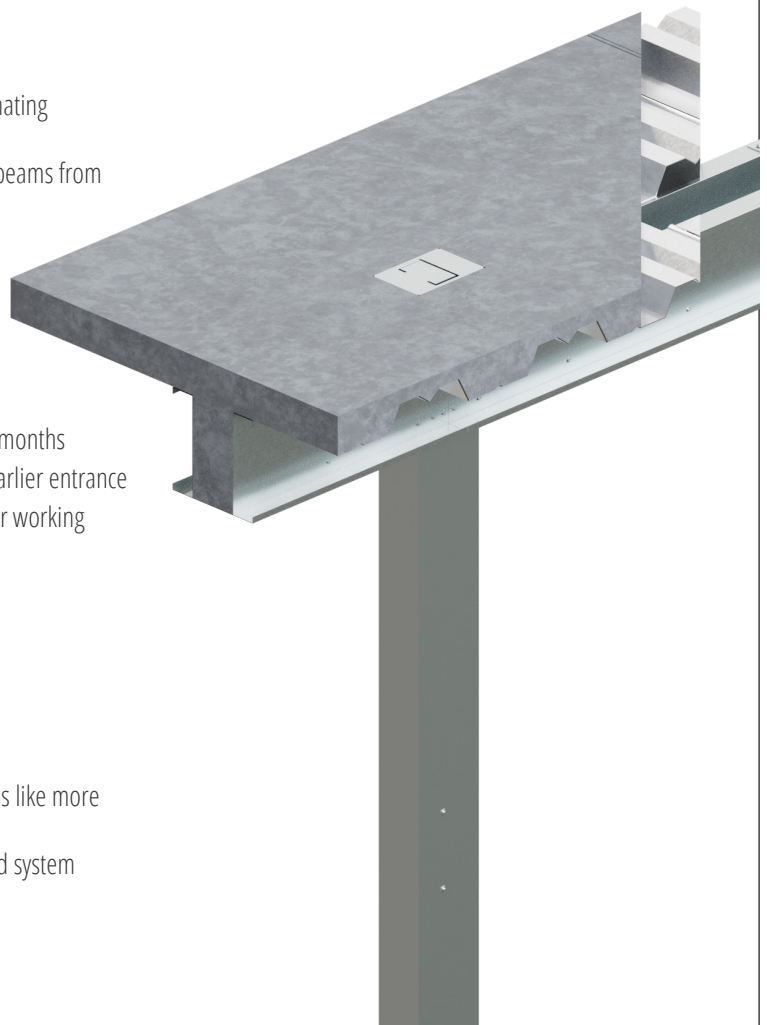
- Accelerates the construction schedule by up to 3 months
- Quicker elevated slab pours allow other trades earlier entrance
- Reach the roof and dry-in sooner providing better working conditions for all trades



STRONGER

Integrated Composite Strength

- Pre-assembled light gauge metal system performs like more expensive structural steel
- Partition panels not required as part of integrated system



The Leader of Innovation and Design

877.456.1602 · www.elevatecs.com
info@elevatecs.com



**ELEVATE
STRUCTURES**
A CENTRAL STATES COMPANY