

TECHNICAL BULLETIN

TARGET MARKET ROOFING

BUILDING TRUST



Subject: SikaFast 3341 Adhesive for adhering Liquid Applied Membrane (LAM) to PVDF Edge Metals

Application

SikaFast 3341 adhesive allows the use of non-Sarnaclad Edge Metal such as Kynar (**PVDF**) to be fabricated and installed at the roofs edge or top of parapet walls and allows the bonding of Sika's LAM membrane systems directly to this metal which forms a rigid bond once cured.

To allow for normal metal movement related to thermal expansion and contraction, a flexible bond must be achieved between the metal components of any edge system prior to application of SikaFast 3341. When using SikaFast 3341, this is accomplished with 2 different metal application methods at the joints:

- 8" metal butt plates at each metal joint and sealed with Sikaflex 1A sealant
- 4" overlap at each metal joint and sealed with Sikaflex 1A sealant

Sealed 8" Metal Butt Plates at each Metal Joint

1. Form the moisture seal between the splice plate and metal pieces by applying beads of Sikaflex-1A in continuous bead as shown.
2. Install edge metal pieces with a ¼" gap between ends centered on the butt plate with Sikaflex-1A moisture seal and mechanically attached with the appropriate fasteners 4" o.c. in a staggered pattern.
3. Apply 3" wide Sika Joint Tape SA over all the joints of the metal pieces covering the joint and hold back 1-1/2 inch back from metals outside edge and roll in place with a neoprene roller. This Sika Joint Tape SA applied centered over joints of the metal creates a reinforced joint with a flexible bond to the metal surface that the SikaFast 3341 will bond to, which allows movement of the metal edge in the finished detail.
4. Mark a line 1-inch back from the outside metal edge and mask off. Apply the SikaFast 3341 to the metal and finish with a 1/16"-1/8" notched trowel. Pull the masking tape while the SikaFast 3341 is still wet.
5. Allow the SikaFast 3341 to cure 2-4 hours depending on temperatures, until set, stable, and tack free.
6. Install masking tape to outside edge of metal. Mix and apply Sikalastic EP Primer, per the product data sheet, on the cured SikaFast 3341. Pull the painters tape while the primer is wet.
7. Allow the Sikalastic EP Primer to cure before continuing with the typical Sikalastic LAM Edge Metal detail.

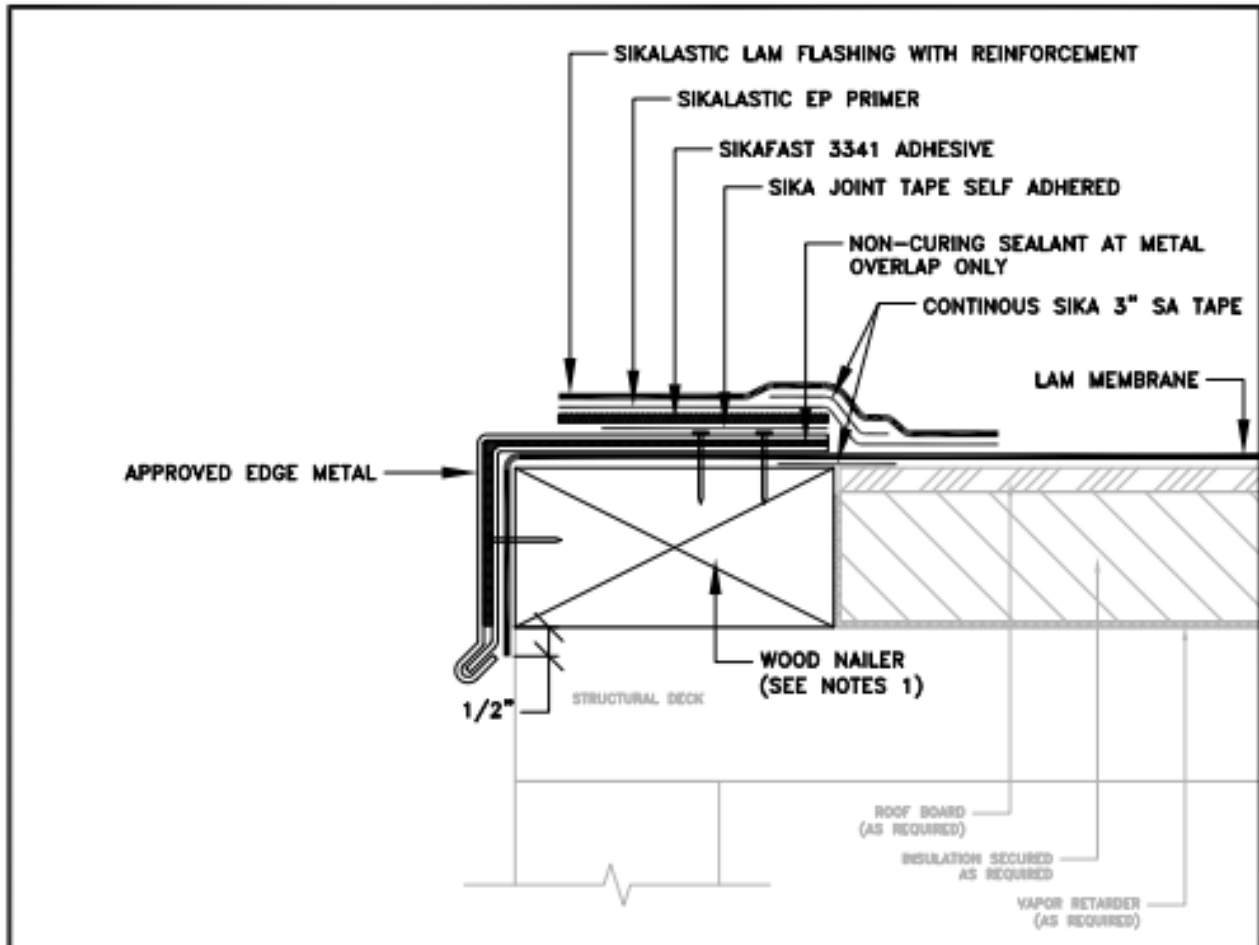
Sealed 4" Metal overlaps at each Metal joint

1. Form the moisture seal between overlap of metal pieces by applying Sikaflex-1A in continuous bead as shown and mechanically attach with the appropriate fastener 4" o.c. in a staggered pattern.
2. Apply 3" wide Sika Joint Tape SA over all the joints of the metal pieces covering the joint and hold back 1-1/2 inches from the metals outside edge and roll in place with a neoprene roller. This Sika Joint Tape SA applied centered over joints of the metal creates a reinforced joint with a flexible bond to the metal surface that the SikaFast 3341 will bond to, which allows movement of the metal edge in the finished detail.
3. Mark a line 1-inch back from the outside metal edge and mask off. Apply the SikaFast 3341 to the metal and finish with a 1/16"-1/8" notched trowel. Pull the masking tape while the SikaFast 3341 is still wet.
4. Allow the SikaFast 3341 to cure 2-4 hours depending on temperatures, until set, stable, and tack free.
5. Install masking tape to outside edge of metal. Mix and apply Sikalastic EP Primer, per the product tech data sheets, on the cured SikaFast 3341. Pull the painters tape while the primer is wet.
6. Allow the Sikalastic EP Primer to cure before continuing with the typical Sikalastic LAM Edge Metal detail.

Notes:

- Coverage Rate is 60-80 LFT per each cartridge based on 3-inch-wide application. Coverage rate will vary based on tools used and application method.
- 1 static mixing tube and 1 applicator tip can be used with 3 to 5 cartridges of SikaFast 3341 adhesive. Weather, ambient temperature, and application thickness will factor into how fast the adhesive starts to cure (typically within 30 minutes). Static mixing tubes and applicator tips can only be used during the same day application.
- SikaFast 3341 Adhesive is dispensed with 490 ml 10:1 Applicator Gun (manual or battery)
Recommended Applicator Gun: <https://www.perigeedirect.com/products/albion-2-partdispensers-for-400ml-490ml-385ml-415ml-cartridges-1-1-2-1-4-1-or-10-1-mix-ratios-manualpneumatic-18v-battery?variant=42332017950974>





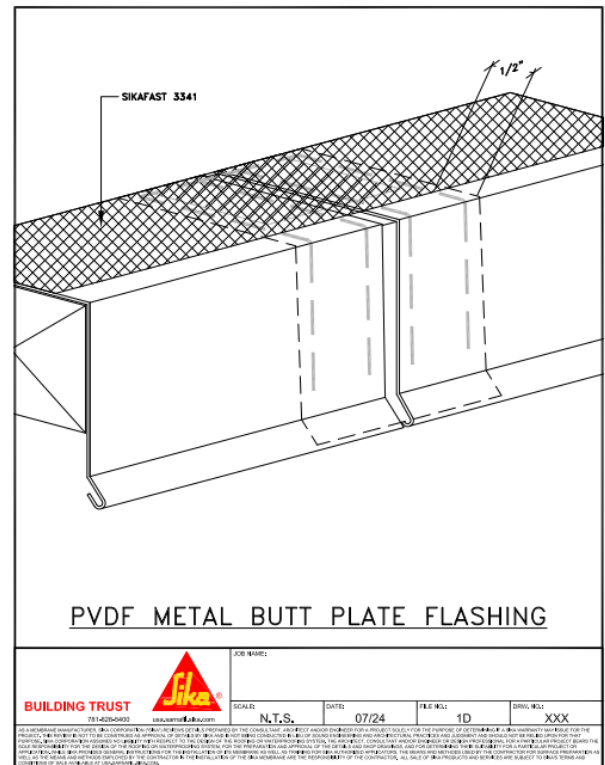
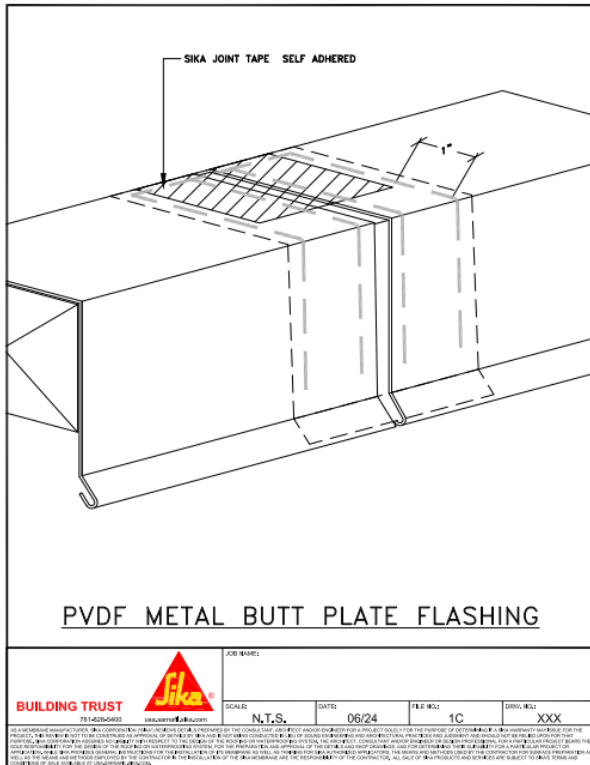
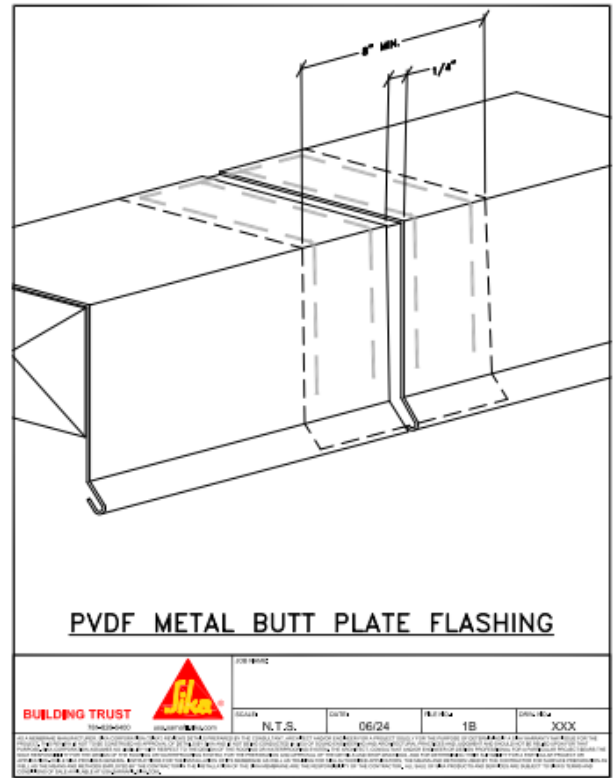
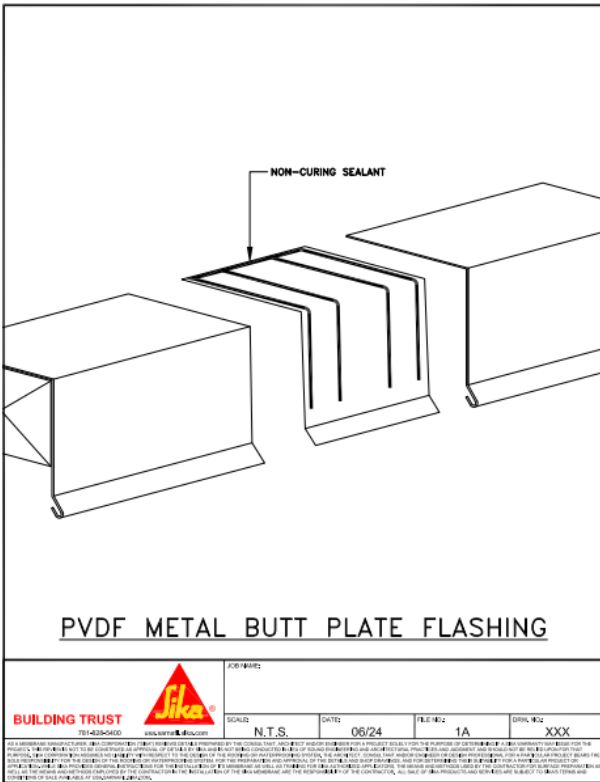
NOTES:

- 1) NEW OR EXISTING WOOD NAILERS SHALL BE ATTACHED ACCORDING TO THE D.O.R., LOCAL CODE, OR INSURANCE REQUIREMENTS, WHICHEVER IS MORE STRINGENT. NAILER HEIGHT TO MATCH TOP SURFACE TO WHICH MEMBRANE IS TO BE APPLIED.

LAM METAL FLASHING WITH SIKAFAST 3341

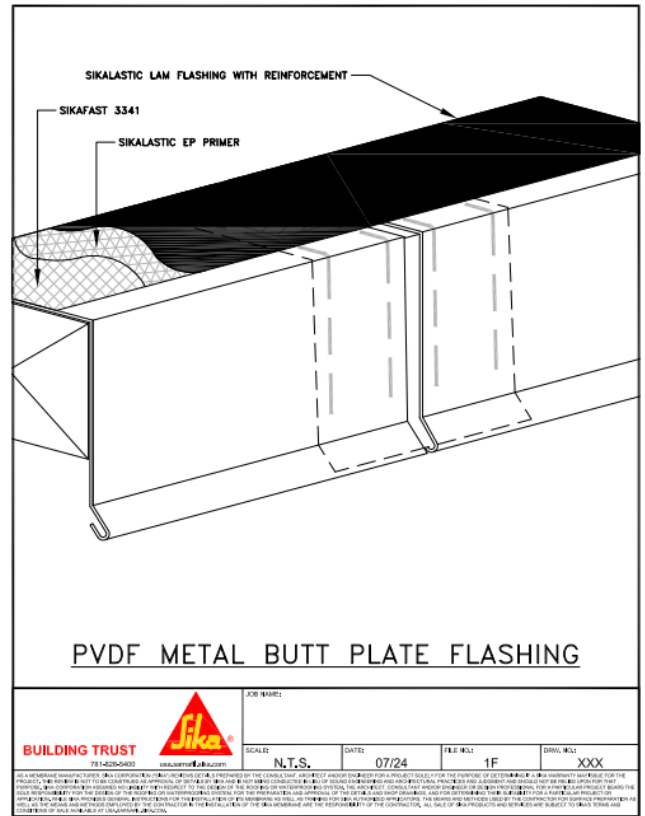
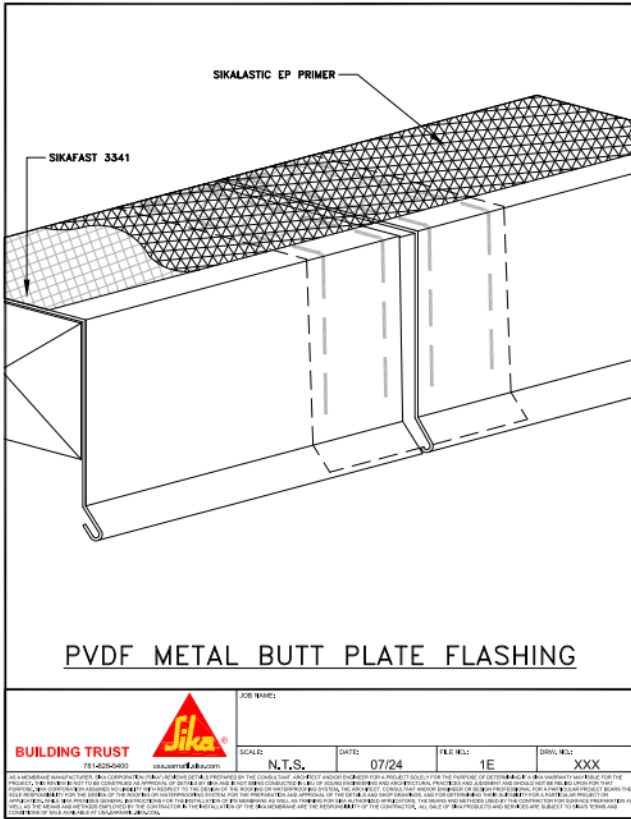
 BUILDING TRUST 751-625-5400 sika.com sika.com	JOB NAME:			
	SCALE: N.T.S.	DATE: 07/24	FILE NO.: LAM-1-6	DRW. NO.: XXX
AS A MEMBRANE MANUFACTURER, Sika Corporation (Sika) reviews details prepared by the consultant, architect and/or engineer for a project solely for the purpose of determining if a Sika warranty may issue for the project. This review is not to be construed as approval of details by Sika and is not being conducted in lieu of sound engineering and architectural practices and judgment and should not be relied upon for that purpose. Sika Corporation assumes no liability with respect to the design of the roof and/or waterproofing system, the architect, consultant and/or engineer or design professional for a particular project bears the sole responsibility for the design of the roof and/or waterproofing system for the preparation and approval of the details and shop drawings, and for determining the liability for a particular project or application. While Sika provides general instructions for the installation of its membrane as well as training for Sika authorized applicators, the means and methods used by the contractor for surface preparation as well as the means and methods employed by the contractor in the installation of the Sika membrane are the responsibility of the contractor. All sale of Sika products and services are subject to Sika's terms and conditions of sale available at sika.com .				

TECHNICAL BULLETIN
Metal Butt Plates at each Metal Joint:



TECHNICAL BULLETIN

Metal Butt Plates at each Metal Joint (cont'd):



TECHNICAL BULLETIN

Metal Overlap Flashing:

