

# PRODUCT CATALOG



METAL ROOFING & SIDING PANELS  
TRIM PROFILES  
POST FRAME ACCESSORIES

*Thicker Steel. Delivered Fast!*

Publish Date: April 2024

# CATALOG INDEX

2	MISSION / VALUES	24	BOARD & BATTEN TRIM PROFILES
3	OUR STORY	25	R-PANEL
4	SMOOTH COLOR SELECTION GUIDE	26	R-PANEL COLOR SELECTION GUIDE
5	CRINKLE COLOR SELECTION GUIDE	27	R-PANEL TRIM PROFILES
6	RAM PANEL	28	5-V PANEL
7	DRIP STOP	29	SOFFIT & FASCIA
8	RAM PANEL TRIM PROFILES	30	SOLID-WALL BRACKET
10	RX-4 PANEL	31	FASTENERS
11	RX-4 PANEL TRIM PROFILES	32	PIPE BOOTS
13	STANDING SEAM	33	CUPOLAS
14	STANDING SEAM COLOR SELECTION GUIDE	34	STEEL ENTRY DOORS
15	STANDING SEAM TRIM PROFILES	35	SLIDING DOOR SYSTEMS
17	3/4" CORRUGATED	36	INSULATIONS
18	CLASSIC CORRUGATED	37	ACCESSORIES
19	MODERN PLANK	38	TRIM PLACEMENT CHART
20	MODERN PLANK TRIM PROFILES	39	24 HOUR JOBSITE DELIVERY
21	METAL LAP	40	UL CERTIFIED PANELS
22	METAL LAP TRIM PROFILES	41	ORDER/ESTIMATE
23	BOARD & BATTEN	42	NOTES

## OUR MISSION

It's tough to be profitable in the construction business if you have to wait on materials.

Ramco has developed a unique system that allows our customers to pick up custom length metal roofing and siding the same day or have us unload it on-site in 48 hours. Our customers save money, completing the project more quickly and easily with less damage!

## OUR PURPOSE

We believe that the practice of honest business brings glory to God and is a blessing to all. Therefore, the Ramco Team is inspired by, and committed to, customer-focused, profitable business that brings value to all those it touches including owners, team members, customers, vendors and the community.

## OUR VALUES

Integrity, Teamwork, Innovation, Quality and Work Ethic



## OUR STORY

### A Tribute to Our Loyal Customers and Community

In 1998, founder and owner Marvin Ramer, started construction on metal buildings in the Rochester, Indiana area. Marvin soon became dissatisfied with long lead times after having to wait several weeks for metal packages. He quickly began to research the possibilities of buying directly from a national manufacturer.

By 2000, Marvin began retailing metal roofing and siding, buying from several different national companies – thus Ramco was born.

Through the years, Ramco has become the Midwest's premiere metal manufacturer by adding world class manufacturing equipment and facilities, including our Woodburn location in 2013. Additionally, Ramco purchases steel directly from the mill, assuring product availability at the best prices.

In 2023, Ramco again expanded its reach with the addition of a new location in Middlebury. Spring of 2024 the Rochester and Woodburn locations both underwent a substantial expansion, encompassing an additional 70,000 + square feet.

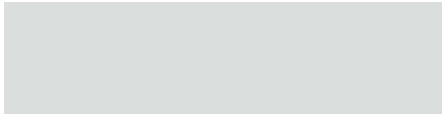
With over two decades of steady growth, Ramco continues to provide our loyal customers with better people and thicker steel in less time.

That said, we are grateful for our journey this far, but in our eyes – we're just getting started.



# Color Selection Guide

## Standard Lifetime



Brilliant <sup>Δ</sup>



Alamo



Light Stone <sup>Δ</sup>



Ivory



Tan



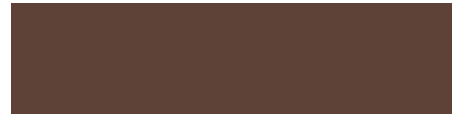
Buckskin



Taupe



Burnished Slate <sup>Δ</sup>



Brown <sup>Δ</sup>



Bright Red



Rustic Red



Burgundy



Ash Gray <sup>Δ</sup>



Pewter Gray



Slate Gray



Charcoal <sup>Δ</sup>



Black <sup>Δ</sup>



Hunter <sup>Δ</sup>



Forest



Copper Metallic



Ocean Blue



Gallery



Western Rust <sup>Δ</sup>



Galvalume <sup>Δ</sup>

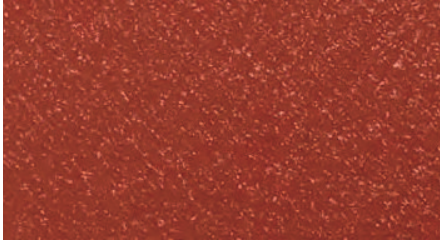
**Note:** This guide is for the following panel profiles: 28-GA Ram Panel, RX-4, 3/4 Corrugated, Modern Plank, Metal-Lap, Board & Batten and 5V.

**Note:** <sup>Δ</sup> also available in 26 GA.



# Color Selection Guide

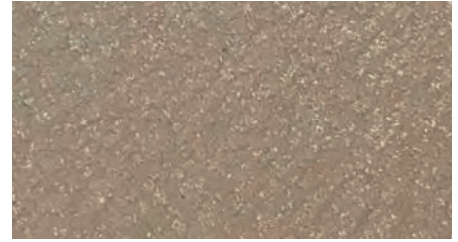
## Crinkle Lifetime



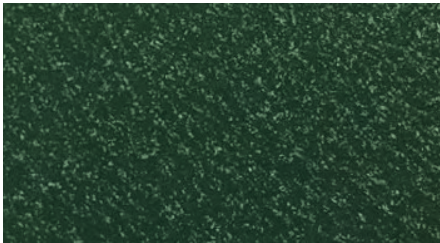
Crinkle Rustic Red



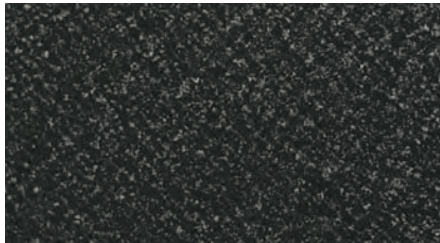
Crinkle Burnished Slate



Crinkle Pebble



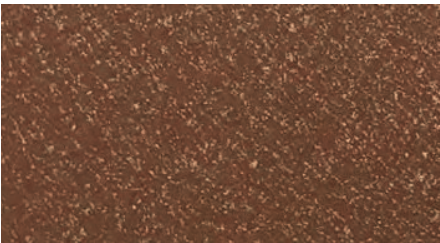
Crinkle Hunter Green



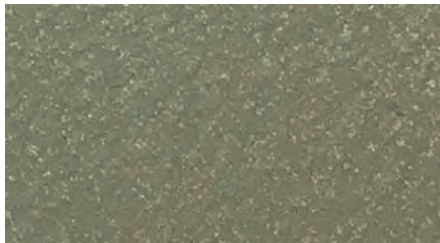
Crinkle Black



Crinkle Dark Bronze



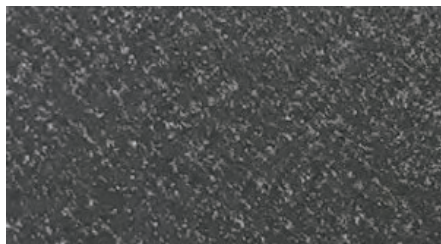
Crinkle Brown



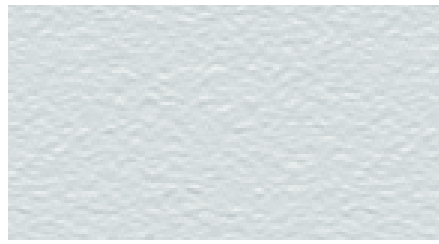
Crinkle Aspen



Crinkle Granite



Crinkle Charcoal



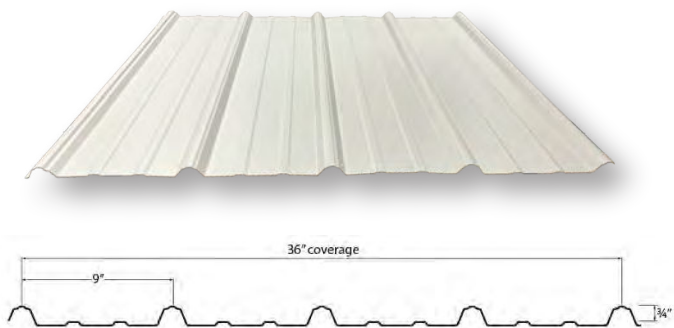
Crinkle Brilliant White

**Note:** This guide is for the following panel profiles: 28-GA Ram Panel, RX-4, 3/4 Corrugated, Modern Plank, Metal-Lap, Board & Batten and 5V.



# Ram Panel

*Crafted For The Professional To Last A Lifetime*



## Summary

Ram-Panel is versatile and can be used in varying applications, such as residential, commercial, and architectural projects



## Panel Specifications

### Thickness

- ✓ 28 Gauge Steel - .0157" Before Paint .0176" After Paint
- ✓ Full Hard 88,000 PSI Min

### Rust Protection

- ✓ AZ50 Galvalume Substrate

### Paint System

- ✓ Sherwin Williams Weather XL

### Sizing

- ✓ 36" Coverage with 3/4" Rib Height
- ✓ Minimum Slope: 3/12

**Note:** Color selection guides for this panel can be found on page 4 and 5.





---

### TECHNICAL DATA

- ✓ UL 723 Approved — Meets flame spread and smoke generation requirements for insurance
- ✓ Antimicrobial Material — Polyester and rubber = NO mold or mildew issues
- ✓ Water Absorption Capacity — Holds up to 10 times its weight in water ( > 1 quart per 10 square foot)
- ✓ Extremely Resistant — Not susceptible to ripping, tearing or deterioration
- ✓ Adhesion Warranty — Adhesion improves with age and is backed by a 20-year adhesion warranty
- ✓ Durable — Material has been tried and proven (marketed for 15+ years) in every climate condition across the globe.=
- ✓ Animal Confinement — Creates another layer of protection from corrosive elements, making it viable for livestock confinement
- ✓ Noise Reduction — Helps reduce rain and reflective noise up to 20%
- ✓ Easy to Clean — With a hose or pressure washer

### THE DRIP STOP SOLUTION

When temperature and humidity conditions reach the dewpoint, moisture condenses on the underside of an uninsulated metal roof. If there is a lot of condensation, drops of water form and start to fall, causing damage to the contents below. The traditional method for dealing with condensation is to try to insulate the roof so that the temperature on the panel never reaches the dew point.

The roof panel with DRIPSTOP anti-condensation felt provides a medium for trapping the moisture in the specially designed pockets formed in the membrane. DRIPSTOP holds the moisture until normal dew point conditions return, and the moisture is released back into the air in the form of normal humidity. DRIPSTOP anti-condensation felt is self adhesive and is applied to the metal panel in the roll forming process. As a result, DRIPSTOP arrives at the building site already in place and installs with the roofing panels.

---

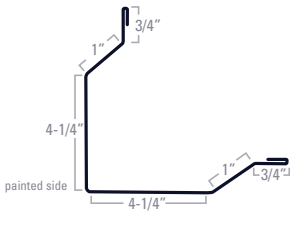
### AREAS OF USE

- ✓ Post Frame / Agricultural Buildings — grain and equipment storage, livestock confinement, outbuildings
- ✓ Steel Buildings
- ✓ Self Storage Units
- ✓ Workshops / Detached Garages
- ✓ Open Walled Structures — carports and truck / RV storage

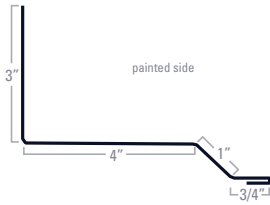
Retrofit or Re-roofing Residential Buildings

# Trims

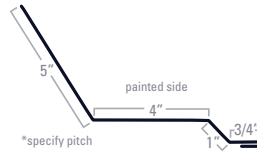
## Ram Panel



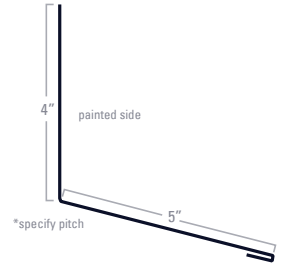
Outside Rake Corner



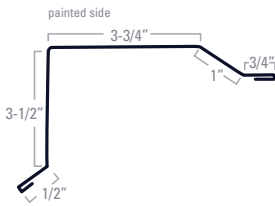
Sidewall



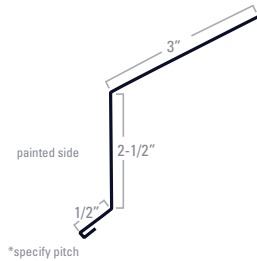
End Wall



Denver Endwall



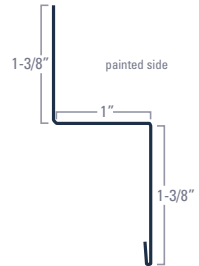
Residential Rake



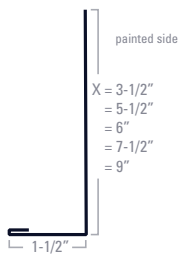
Residential Eave



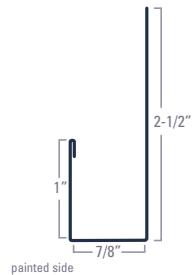
Ridge Cap



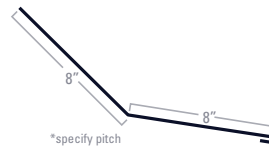
Double Angle



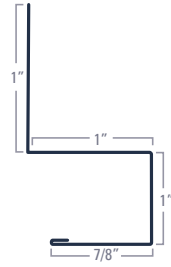
Single Angle



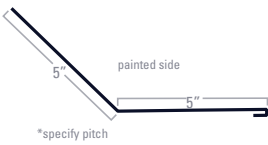
J-Trim



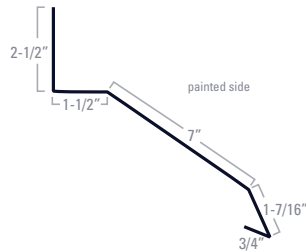
Transition Trim



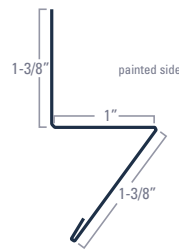
Square Base Trim



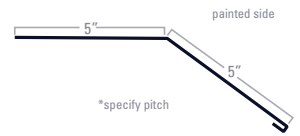
Lower Gambrel



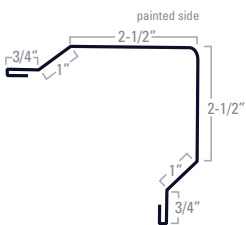
Face Round Track Cover



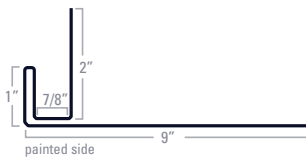
Rat Guard



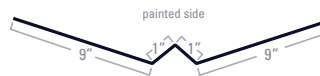
Upper Gambrel



Mini Corner/Rake



Overhead Door Jamb



Valley Trim

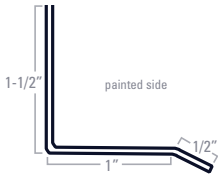


Residential Hip Cap

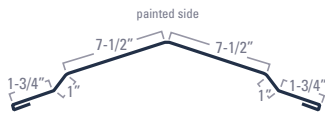


# Trims

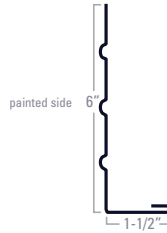
## Ram Panel



Double Bent Drip Cap



Wide Ridge Cap



Beaded Fascia



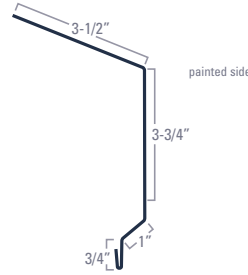
Flatsheet



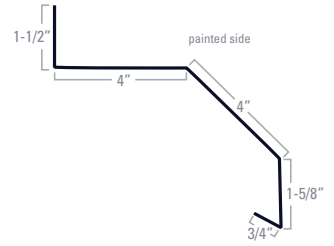
Wide Valley Trim



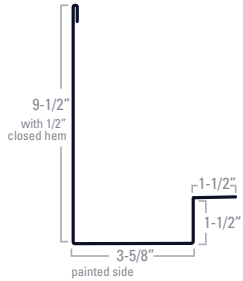
Soffit Box



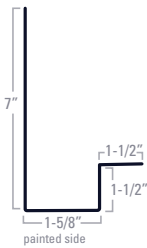
Fascia Eave



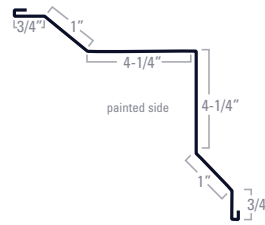
Top Mount Track Cover



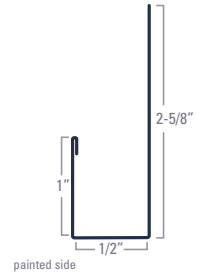
DJ8 Wide Jamb Trim



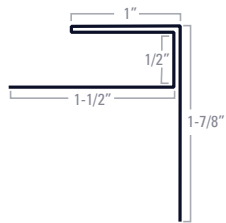
DJ8 Jamb Trim



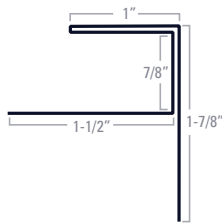
Inside Corner



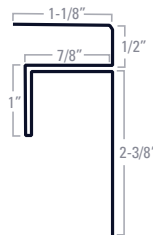
Soffit J-Trim



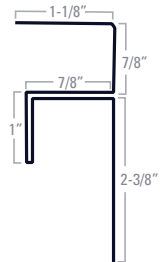
F Trim for Soffit



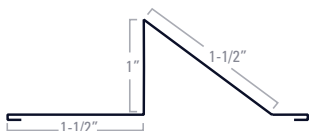
F Trim for Panel



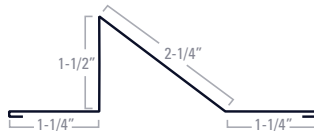
F&J for Soffit



F&J for Panel



SR Standard Rail



SNI Roof Rail

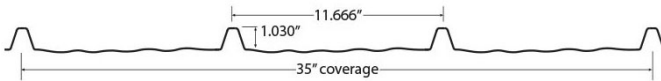
Soffit Trim Panel

Soffit Trim



# RX-4 Panel

*Crafted For The Professional To Last A Lifetime*



## Summary

Ramco's RX-4 panel is suited for roofing & siding applications. The exposed fastener panel offers a high end residential look.

## Panel Specifications

### Thickness

- ✓ 28 Gauge Steel - .0157" Before Paint .0176" After Paint
- ✓ Full Hard 88,000 PSI Min

### Rust Protection

- ✓ AZ50 Galvalume Substrate

### Paint System

- ✓ Sherwin Williams Weather XL

### Sizing

- ✓ 35" Coverage with 1.030" Rib Height
- ✓ Minimum Slope: 3/12

**Note:** Color selection guides for this panel can be found on page 4 and 5.



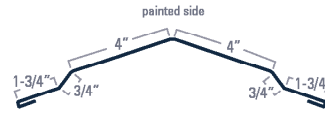
# Trims RX-4



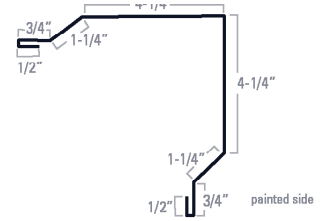
VALLEY TRIM



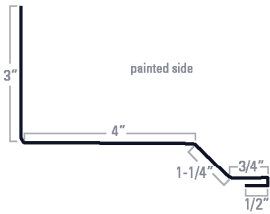
WIDE VALLEY TRIM



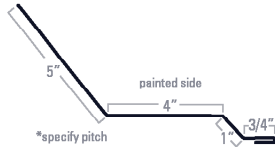
RIDGE CAP



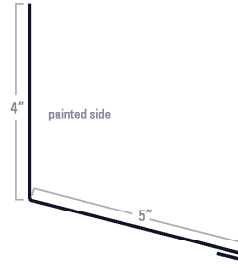
OUTSIDE CORNER RAKE



SIDEWALL



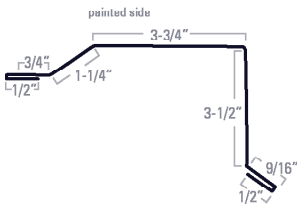
END WALL



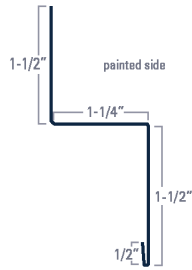
DENVER ENDWALL



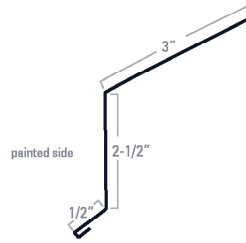
FLATSHEET



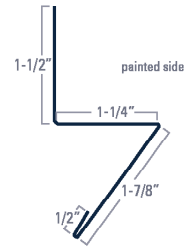
RESIDENTIAL RAKE



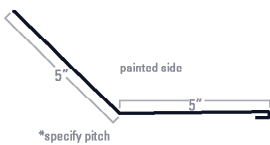
DOUBLE ANGLE



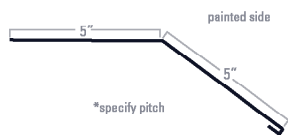
RESIDENTIAL EAVE



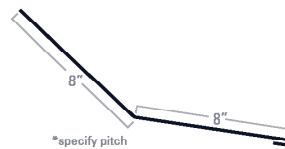
RAT GUARD



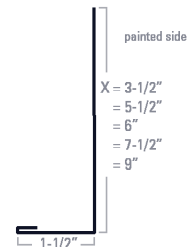
LOWER GAMBREL



UPPER GAMBREL

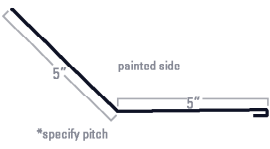


TRANSITION TRIM

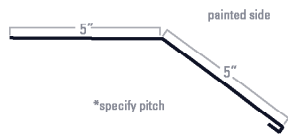


SINGLE ANGLE

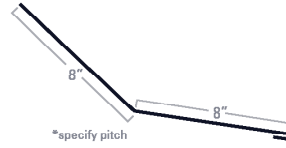
# Trims RX-4



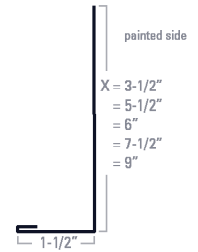
LOWER GAMBREL



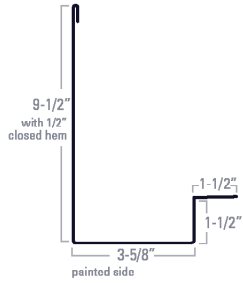
UPPER GAMBREL



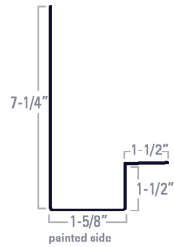
TRANSITION TRIM



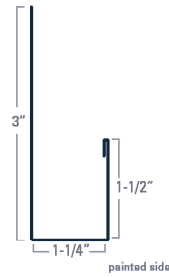
SINGLE ANGLE



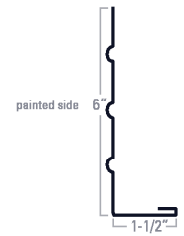
DJ8 WIDE JAMB TRIM



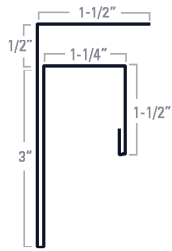
DJ8 JAMB TRIM



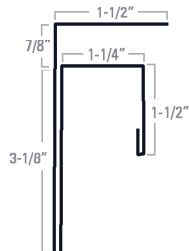
J-TRIM



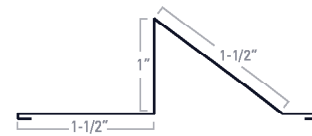
BEADED FASCIA



F&J FOR SOFFIT



F&J FOR PANEL



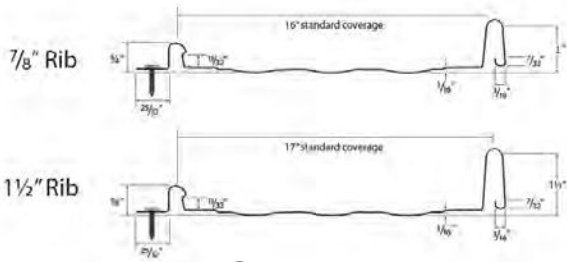
SR STANDARD RAIL





# Standing Seam

*Crafted For The Professional To Last A Lifetime*



## Summary

Standing Seam is designed with a concealed fastener system. Additionally the panel comes with a pre-notched option which saves contractors installation time on the job site.

## Panel Specifications

### Thickness

- ✓ 26 Gauge Steel - .0185" Before Paint .0202" After Paint
- ✓ 50,000 PSI

### Rust Protection

- ✓ AZ50 Galvalume Substrate

### Paint System

- ✓ Sherwin Williams Weather XL
- ✓ Kynar 500 in select colors

### Sizing

- ✓ 16" & 17" Coverage with 1" & 1.5" Rib Height
- ✓ Minimum Slope: 3/12



**Note:** Color selection guides for this panel can be found on page 14.

# Color Selection Guide

## 26-GA Smooth Colors



Brown



Charcoal



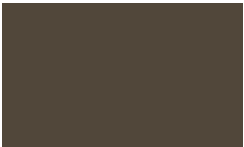
Hunter



Rustic Red



Ocean Blue



Burnished Slate



Burgundy



Black



Galvalume®



Copper Penny

## 26-GA Crinkle Lifetime



Burnished Slate



Brown



Rustic Red



Hunter Green



Black



Charcoal

## 24-GA Smooth Colors



Classic Green



Matte Black



Burnished Slate



Mansard Brown



Regal Blue



Colonial Red



Charcoal



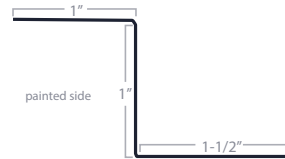
Slate Gray

# 1" Trims

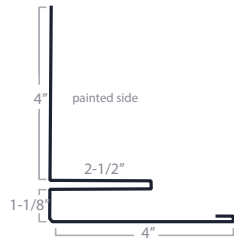
## Standing Seam



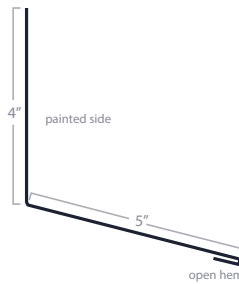
Concealed Fastener Ridge



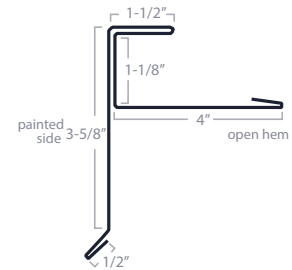
Solid & Vented Z Trim



Sidewall



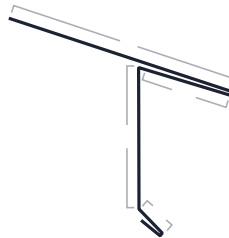
Endwall



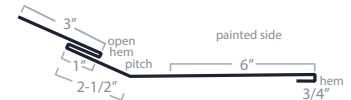
Concealed Fastener Rake



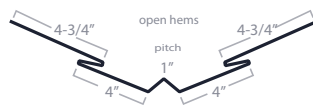
Off-Set Cleat



D-Edge



Transition Trim



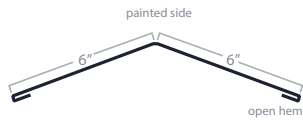
Valley Trim



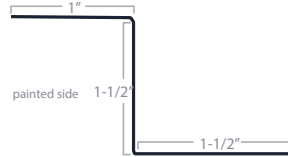
Filler Trim

# 1.5" Trims

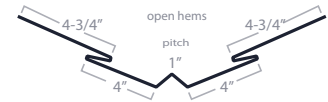
## Standing Seam



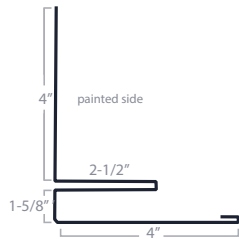
Concealed Fastener Ridge



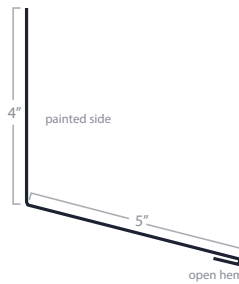
Solid & Vented Z Trim



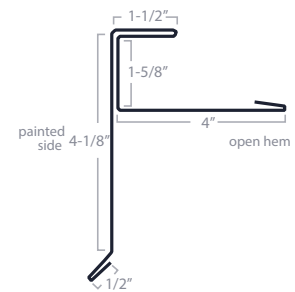
Valley Trim



Sidewall



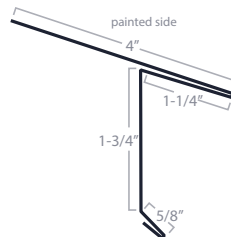
Endwall



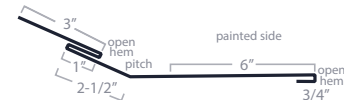
Concealed Fastener Rake



Off-Set Cleat



D-Edge



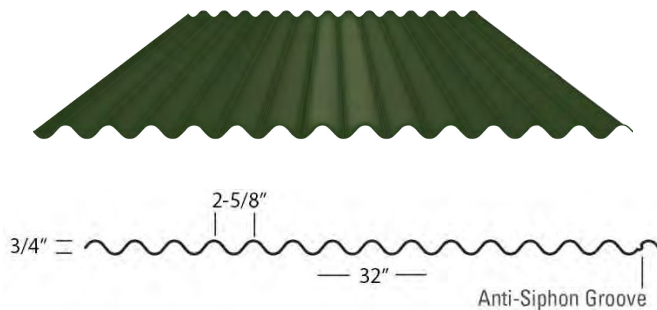
Transition Trim





# 3/4" Corrugated

*Crafted For The Professional To Last A Lifetime*



## Summary

The 3/4" Corrugated are popular with a modern and contemporary design. The panel is versatile for interior and exterior uses with crinkle and standard color options to choose from.

## Panel Specifications

### Thickness

- ✓ 28 Gauge Steel - .0157" Before Paint .0176" After Paint
- ✓ Full Hard 88,000 PSI Min

### Rust Protection

- ✓ AZ50 Galvalume Substrate

### Paint System

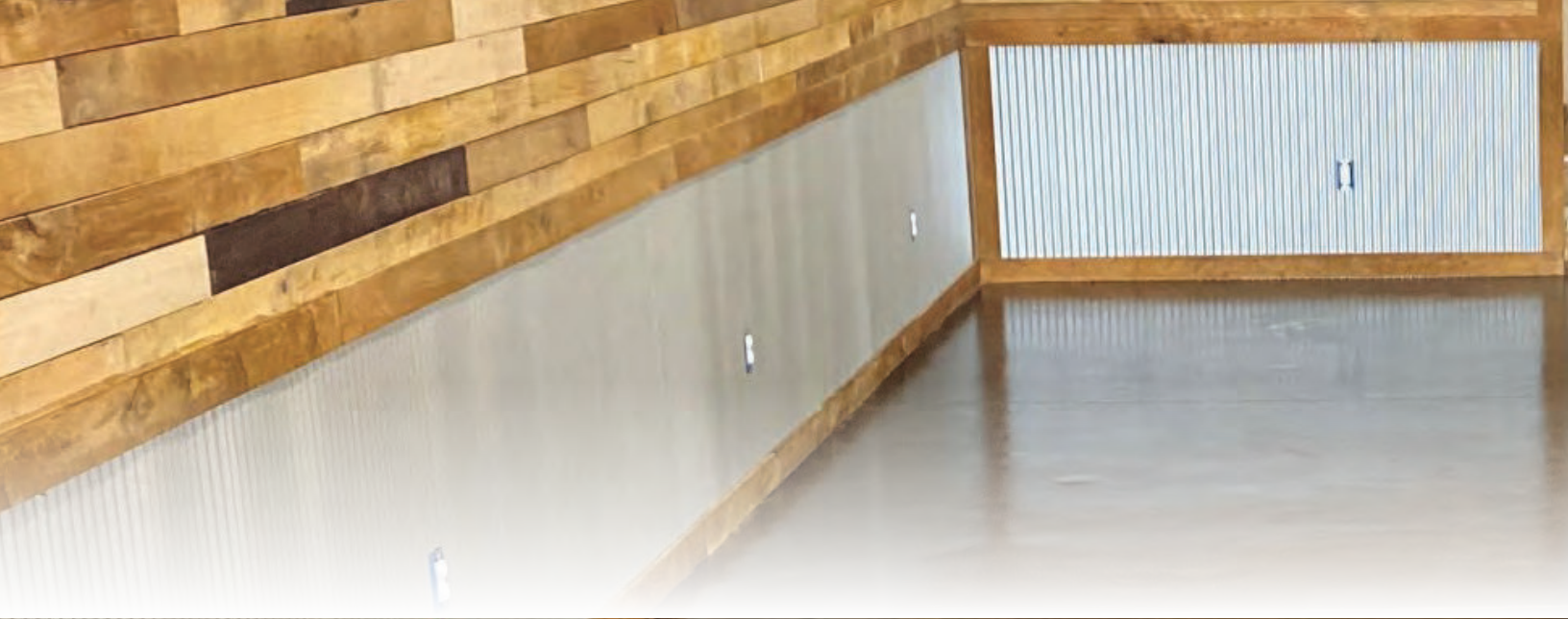
- ✓ Sherwin Williams Weather XL

### Sizing

- ✓ 32" Coverage with 3/4" Rib Height
- ✓ Minimum Slope: 3/12

**Note:** Color selection guides for this panel can be found on page 4 and 5.





# Classic Corrugated

*Crafted For The Professional To Last A Lifetime*



## Summary

The Classic Corrugated (1-1/4 corrugated) is an accent panel that is suited for interior and exterior projects. This panel is great for eye-catching wainscot, dormer accents, bars, kitchen islands and other creative projects.

## Panel Specifications

### Thickness

- ✓ 28 Gauge Steel - .0145 Thick
- ✓ Full Hard 88,000 PSI Min

### Rust Protection

- ✓ AZ50 Galvalume Substrate

### Paint System

- ✓ Acrylic Coated Galvalume
- ✓ Painted Available in Select Colors

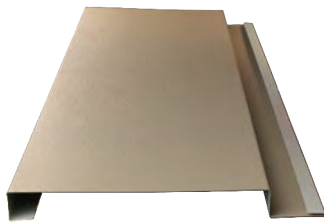
### Sizing

- ✓ 24" Coverage with 1/4" Rib Height
- ✓ Minimum Slope: 3/12

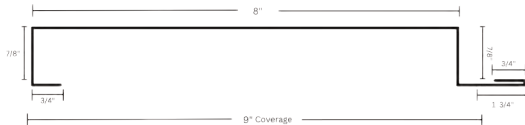


# Modern Plank

*Crafted For The Professional To Last A Lifetime*



Installs With Clips



## Summary

The modern plank is an accent panel which provides a distinct look to add a modern touch to your project.

## Panel Specifications

### Thickness

- ✓ 28 Gauge Steel - .0157" Before Paint .0176" After Paint

### Rust Protection

- ✓ AZ50 Galvalume Substrate

### Paint System

- ✓ Sherwin Williams Weather XL

### Sizing

- ✓ 9" Coverage with 7/8" Rib Height



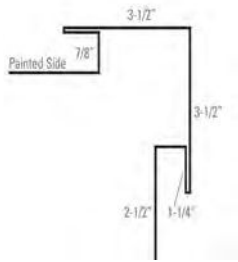
**WeatherXL**

**Note:** Color selection guides for this panel can be found on page 4 and 5.

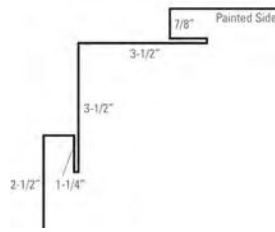


# Trims

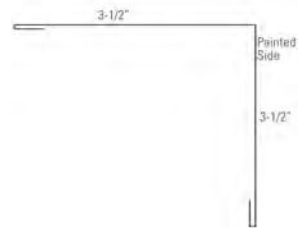
## Modern Plank



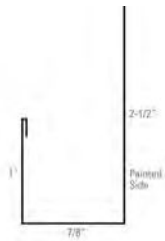
Outside Corner



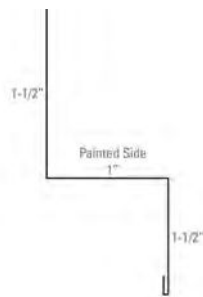
Inside Corner



Open Hem Corner



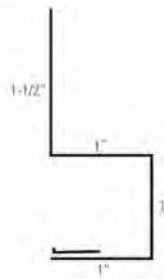
J-Trim



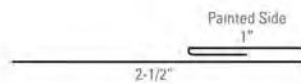
Double Angle



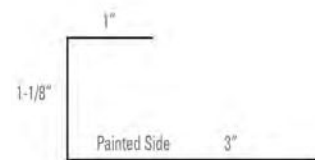
Drip Cap 1"



Square Base Trim



Utility Trim

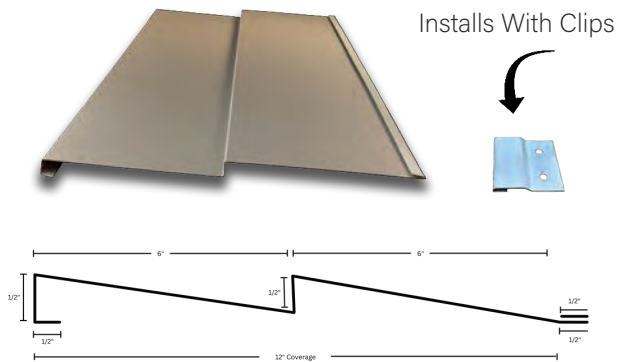


Panel Cap



# Metal-lap

*Crafted For The Professional To Last A Lifetime*



## Summary

Metal-lap provides a great alternative to traditional wood siding options and can be used in commercial and residential settings.

## Panel Specifications

### Thickness

- ✓ 28 Gauge Steel - .0157" Before Paint .0176" After Paint

### Rust Protection

- ✓ AZ50 Galvalume Substrate

### Paint System

- ✓ Sherwin Williams Weather XL

### Sizing

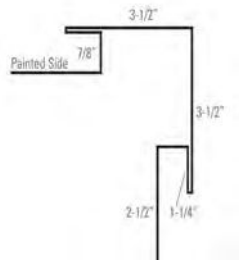
- ✓ 12" Coverage with 1/2" Rib Height

**Note:** Color selection guides for this panel can be found on page 4 and 5.

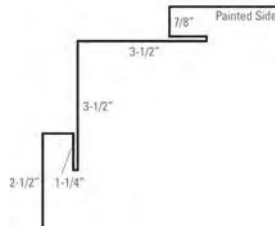


WeatherXL

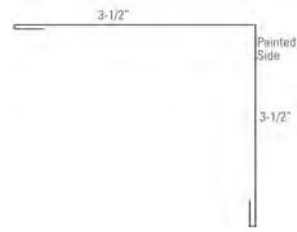
# Trims Metal-lap



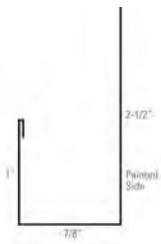
Outside Corner



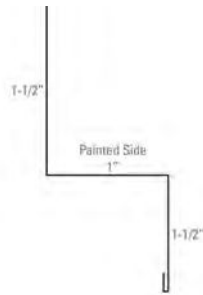
Inside Corner



Open Hem Corner



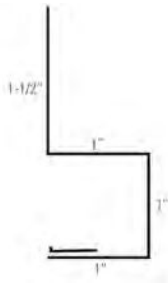
J-Trim



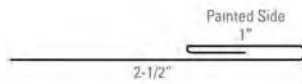
Double Angle



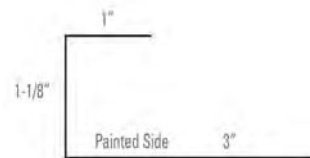
Drip Cap 1"



Square Base Trim



Utility Trim

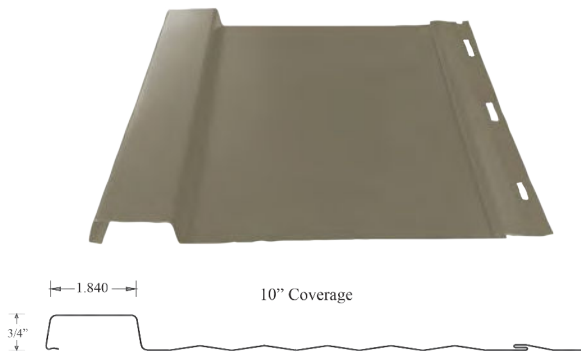


Panel Cap



# Board and Batten

*Crafted For The Professional To Last A Lifetime*



## Summary

The Board and Batten panel is a concealed fastener panel that takes place of historically wooden siding, but now boasts the longevity of metal.

## Panel Specifications

### Thickness

- ✓ 28 Gauge Steel - .0157" Before Paint .0176" After Paint
- ✓ Full Hard 88,000 PSI Min

### Rust Protection

- ✓ AZ50 Galvalume Substrate

### Paint System

- ✓ Sherwin Williams Weather XL

### Sizing

- ✓ 10" Coverage with 3/4" Rib Height

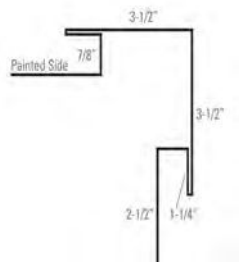


WeatherXL

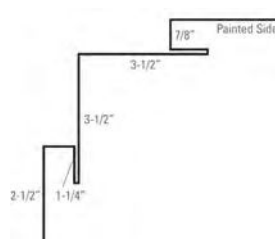
**Note:** Color selection guides for this panel can be found on page 4 and 5.

# Trims

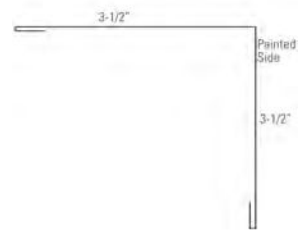
## Board and Batten



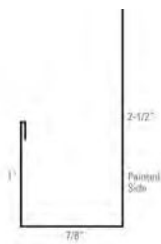
Outside Corner



Inside Corner



Open Hem Corner



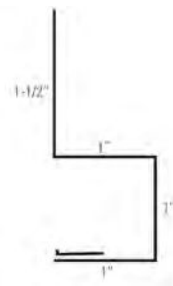
J-Trim



Double Angle



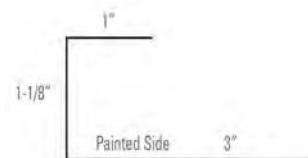
Drip Cap 1"



Square Base Trim



Utility Trim



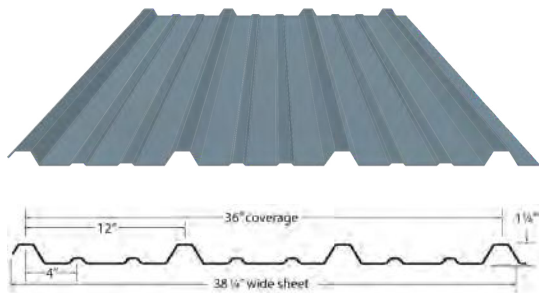
Panel Cap





# R-Panel

*Crafted For The Professional To Last A Lifetime*



## Summary

The popular and versatile R-Panel features a classic look and is used primarily for commercial, post-frame and steel frame building applications.

## Panel Specifications

### Thickness

- ✓ 26 Gauge Steel - .0185" Before Paint .0202" After Paint
- ✓ 50,000 PSI Min

### Rust Protection

- ✓ AZ50 Galvalume Substrate

### Paint System

- ✓ Sherwin Williams Weather XL

### Sizing

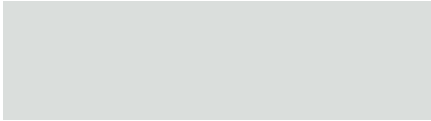
- ✓ 36" Coverage with 1.25" Rib Height
- ✓ Minimum Slope: 1.5/12

**Note:** Color selection guides for this panel can be found on page 26.



# Color Selection Guide

## 26-GA Lifetime



Brilliant <sup>Δ</sup>



Burnished Slate



Light Stone <sup>Δ</sup>



Ash Gray



Galvalume



Brown <sup>Δ</sup>



Charcoal



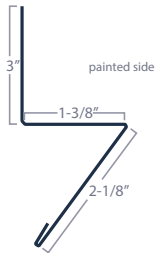
Black



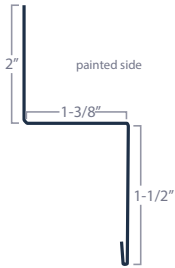
Hunter

# Trims

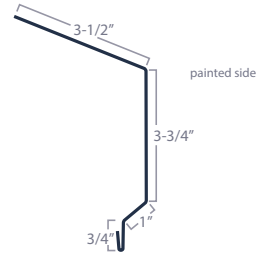
## R-Panel



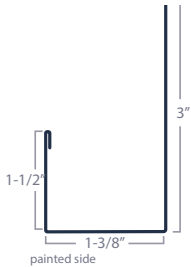
Rat Guard



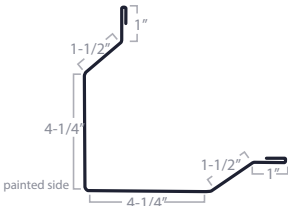
Double Angle



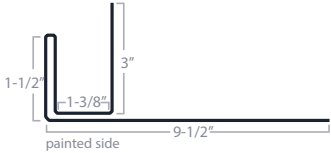
Fascia Eave



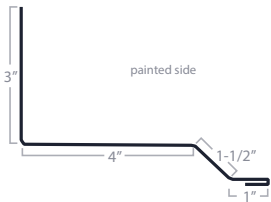
J Trim



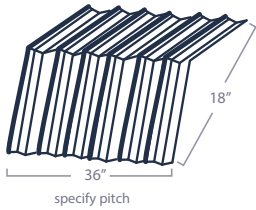
Outside Corner



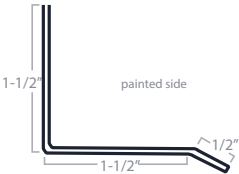
Overhead Door Trim



Sidewall



Formed Ridge Cap

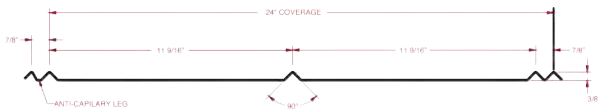
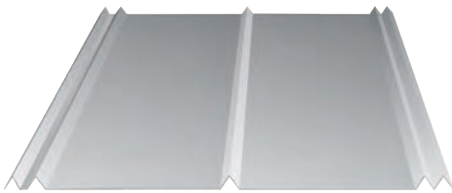


Drip Cap



# 5-V Panel

*Crafted For The Professional To Last A Lifetime*



## Summary

Ramco's 5-V panel is suited for interior use. The unique panel is a great accent panel that can add stylish detail to your project.

## Panel Specifications

### Thickness

- ✔ 28 Gauge Steel - .0157" Before Paint .0176" After Paint
- ✔ Full Hard 88,000 PSI Min

### Rust Protection

- ✔ AZ50 Galvalume Substrate

### Paint System

- ✔ Sherwin Williams Weather XL

### Sizing

- ✔ 24" Coverage with .75" Rib Height
- ✔ Minimum Slope: 4/12

**Note:** Color selection guides for this panel can be found on page 4 and 5.

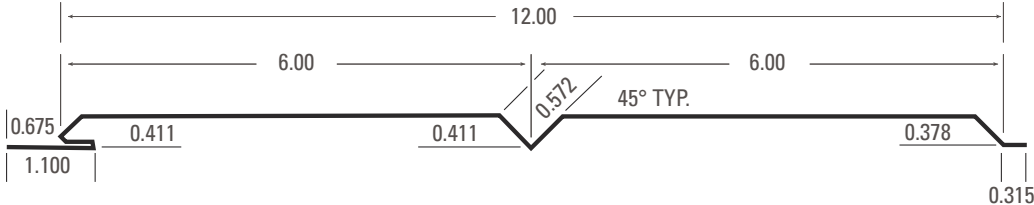




# SOFFIT & FASCIA

## Specifications

- ✓ Solid and vented steel soffit
- ✓ Custom soffit cuts frp, 11" to 12'
- ✓ 3.5" to 8" fascia widths
- ✓ Pver 30 color options





# Solid-Wall Bracket

*Crafted For The Professional To Last A Lifetime*

Wet Set Option



Dry Set Option

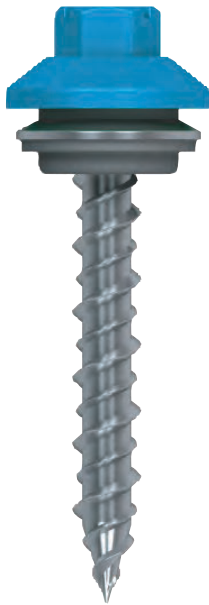


The Solid Wall brackets help you build strong foundations and walls quickly and easily - saving you time on the jobsite.

## Specifications

- ✓ Wet & Dry Set Option Available
- ✓ Dry Set Is Suited For Situations where Foundation Has Been Poured and Cured.
- ✓ Can be used in new buildings or remodel projects
- ✓ Wet Set Can Be Installed When Concrete Is Still Wet

# Fasteners



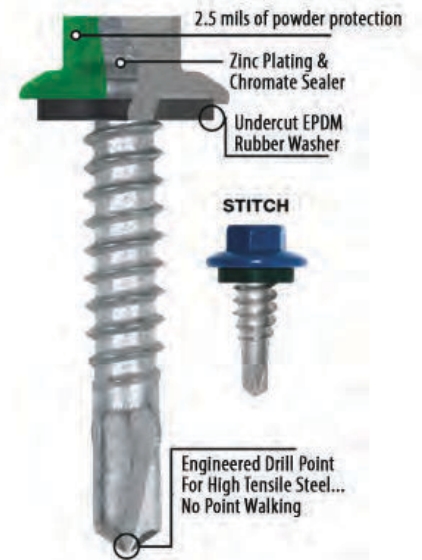
## ULTIMATE SCREW

- Lifetime 40 Year Warranty Long Life Fastener.
- Designed to fasten steel roofing to wood purlins used in post-frame construction, & plywood or OSB used in residential construction.
- 5/16 cupped HWH with a molded ZAMAC 5 Zinc-Aluminum alloy provides lifetime protection against red rust on the head & washer. The ZAMAC 5 alloy provides more strength than more common ZAMAC 3 alloy. You may obtain a free copy of the written warranty upon request.
- ULTIMATE is an excellent choice for GALVALUME & other long-life metal roof panels.
- Threads transition from fine to coarse to generate superior holding strength in various wood substrates.
- Sharp point with pronounced lead thread consistently drills high-tensile 29 & 26 gauge steel with no "point walking."
- Type 17 point reduces metal shavings that can embed themselves in the rubber washer.



## #10 WOODTITE

- Innovative hybrid threads penetrate metal panels, hard woods and knots allowing for quicker installation
- Self tapping type-17 point, to help remove pigtails
- Nonconductive washer
- #10 diameter, 14 threads per inch
- Carbon Steel with Oxyseal coating



## STEELBINDER MAXX SCREW

- Fastener designed to attach metal roof and sidewall panels used in pre-engineered metal building applications.
- #12 Diameter 5/16 Cupped HWH self-drilling fastener easily penetrates steel up to .210 in thickness with no "point walking". 1/4 Stitch will securely fasten 2 layers of 26 GA with no strip-out.
- Cupped head & washer encapsulate EPDM rubber washer and provide a secure seal even when driven at an angle.
- Stocked in Ramco Commercial Colors only

# Pipe Boots



## Summary

Pipe boots are flashing that goes around the base the pipes coming out of our roof and waterproofs them.

## Boot Specifications

### Standard Boots

Sizes	Temp Rating
1-1/4" - 4"	238 Degrees
3" - 6"	238 Degrees
4" - 7"	238 Degrees
5" - 9"	238 Degrees
6" - 11"	238 Degrees
7" - 13"	238 Degrees
10" - 18"	238 Degrees

### High Temp Boots

Sizes	Temp Rating
4" - 7"	392 Degree
7" - 13"	392 Degrees

### Split Boots

Sizes	Temp Rating
1/2" - 4"	238 Degrees
3-1/4" - 10"	238 Degrees

# Windows



**BARN STYLE  
HOPPER WINDOWS**

22 X 29 | RO 23-1/2 X 30-1/2



**WHITE VINYL SLIDER WINDOW**

36 X 24 | RO 36-1/2 X 23-1/2  
 36 X 36 | RO 36-1/2 X 35-1/2\*  
 48 X 36 | RO 48-1/2 X 35-1/2\*



**WHITE VINYL SINGLE HUNG**

30 X 36 | RO 23-1/2 X 30-1/2\*  
 36 X 48 | RO 36-1/2 X 48-1/2\*

\*WITH OR WITHOUT GRIDS



# Cupolas



## Window Cupola

24 x 24" cupola with windows  
 36 x 36" cupola with windows  
 48 x 48" cupola with windows



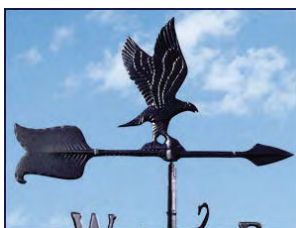
## Louver Cupola

24 x 24" cupola with louvers  
 36 x 36" cupola with louvers  
 48 x 48" cupola with louvers

- ✓ Prepainted 29 gauge construction
- ✓ Available in Ramco colors
- ✓ All metal edges are hemmed
- ✓ No need to worry about red-rust
- ✓ Bird screen included for mounting in curb
- ✓ Roof and sides interlock for weather-tite connection
- ✓ 24", 36" and 48" shipped knocked-down

## Stock Weathervanes

24"	30"	46"
Country Doctor	Buck	Eagle
Eagle	Country Doctor	Horse
Horse	Cow	Rooster
Rooster	Eagle	
	Horse	
	Rooster	





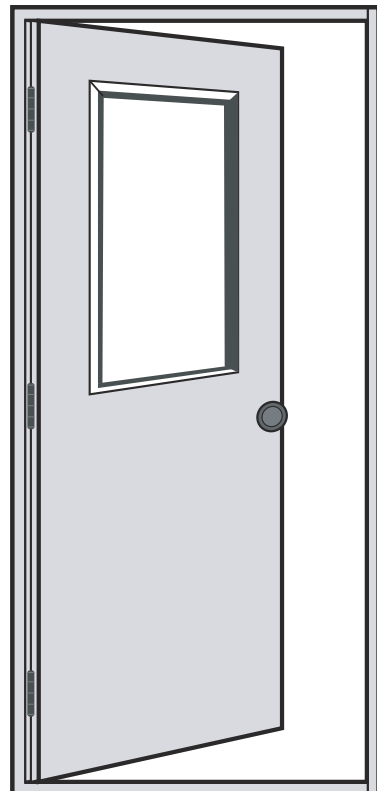
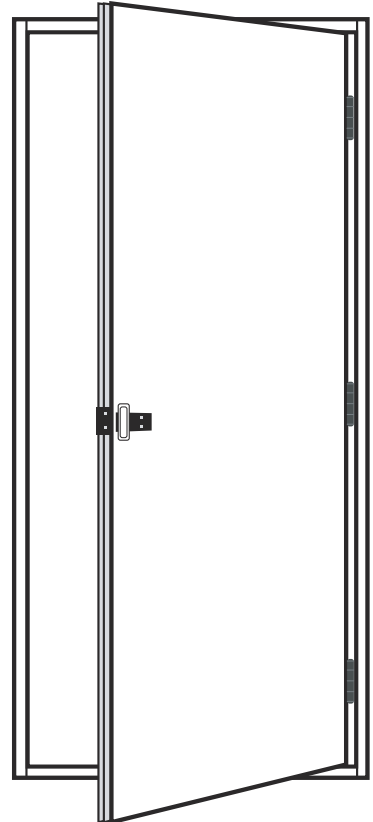
# Steel Entry Doors



## HEAVY DUTY T8 THERMALLY BROKEN DOOR

3068 RIGHT OR LEFT HAND SWING  
OPTIONAL 9-LIGHT 22 X 36  
ALUMINUM FRAME WINDOW

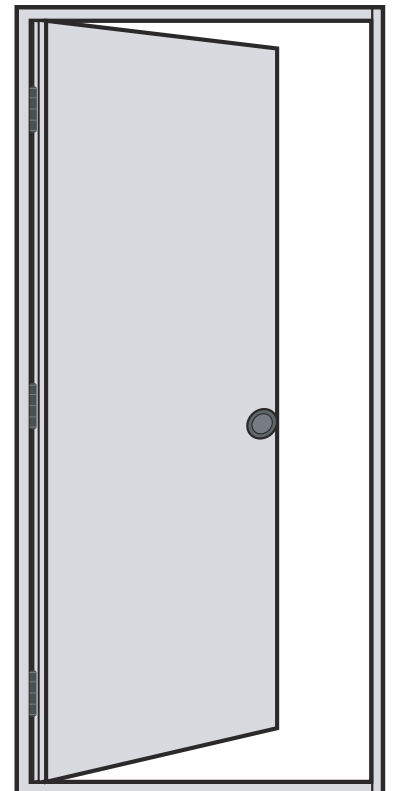
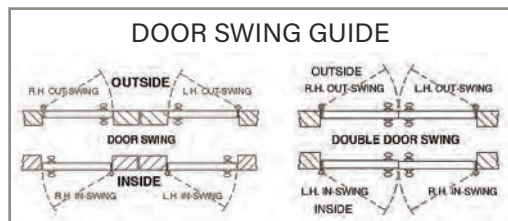
- Excellent energy savings
- Attractive seamless appearance
- Low maintenance (no painting)
- Durable yet economical
- Full thermal break of jambs, header / threshold and panel
- 16 gauge x 3-1/2" pre-painted jambs
- 24 gauge pre-painted white door panel
- Full perimeter weatherstripping
- Universal 4-way swing
- 3'0" x 6'-8" RO 39-1/4" x 81-1/4"
- 3 fixed pin hinges
- Nylon lockset insert
- Adjustable strike plate
- Prepped for closure



## STANDARD AS2 STEEL ENTRY DOOR

RIGHT OR LEFT HAND SWING  
OPTIONAL 1-LIGHT 22 X 36 WINDOW

- Full 1-3/4" thick panel
- Wrap-around design gives commercial look to panel
- Pre-hung 4-way universal swing
- Frame has common header/threshold
- 2-3/4" backset standard
- 26 gauge pre-painted white door panel
- Fixed-pin hinges
- Nylon lockset insert
- 16 gauge x 3-1/2" pre-painted jambs
- 3'0" x 6'-8" RO 38-1/4" x 81-1/4"



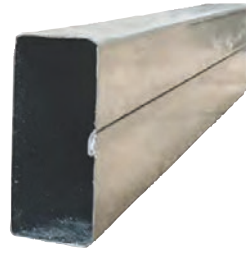
# Sliding Door Systems



SIDE RAIL



DOUBLE COUPLE H RAIL



STEEL GIRT



BOTTOM RAIL



BIG FRAME  
BOTTOM RAIL



BIG FRAME SIDE RAIL



BIG FRAME  
DOUBLE COUPLE H RAIL



KEYHOLE TRACK



STAY GUIDE



CANNONBALL  
TROLRIES



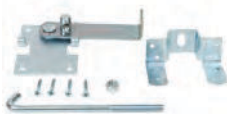
CANNONBALL  
SPLICE COLLAR



DOUBLE TRACK  
BRACKET



CENTER SNUGGER



JAMB LATCH



CANNONBALL  
KEEPER STOPPER



TRACK END CAP



OFFSET ADJUSTABLE  
STAY ROLLER



LONG FACE MOUNT  
TRACK BRACKET



ADJUSTABLE  
DOOR STOP



SHORT FACE MOUNT  
TRACK BRACKET



JUMBO DOOR HANDLE

# Insulations

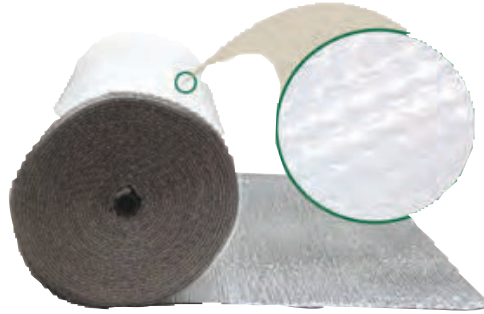
## WALL INSULATION



### TEXTRAFINE POST FRAME INSULATION

- Available in 93" x 60'
- Unfaced R19 batt
- Strong and resilient insulation
- Easily to cut and install

## VAPOR BARRIERS



### REFLECTIVE DOUBLE BUBBLE FOIL / WHITE INSULATION

- 4' x 125' and 6' x 125' roll sizes
- Easy to handle and install
- Class A / Class 1 Fire Rating
- Inhibits dew point condensation
- Vapor retarder (0.02 perms)
- Non-toxic / non-carcinogenic

## CEILING INSULATION



### FIBERGLASS INSULATION BATT

- R-30 unfaced 24" x 48"
- Pre-cut for easy install
- Helps maintain temperature and control noise
- Formaldehyde free, GreenGuard GOLD certified



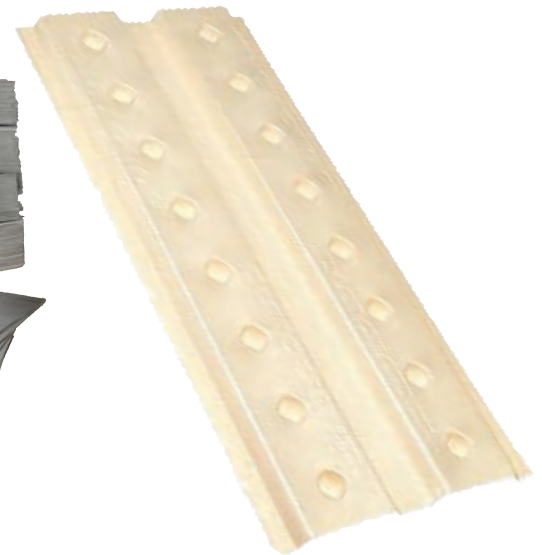
### VINYL BACKED INSULATION

- 4' x 50' and 5' x 50' rolls
- 6" R19 with vinyl back
- Energy saver
- Sound control batts
- Easy to install



### THERMOBLOCK FOAM INSULATION

- Lightweight 4' x 8" sheets
- Non-toxic and requires no special equipment or clothing
- Reflects radiant energy back to its source, helping distribute heat evenly, resulting in greater energy savings
- Virtually eliminates moisture and air infiltration.



### FOAM AIR BAFFLE

- Polystyrene construction is light-weight and moisture resistant
- Designed to channel air into the attic for circulation
- Install between rafters to provide an unobstructed air channel through insulation to keep air flowing from soffits to ridge vents
- Can be cut to fit most joist spaces

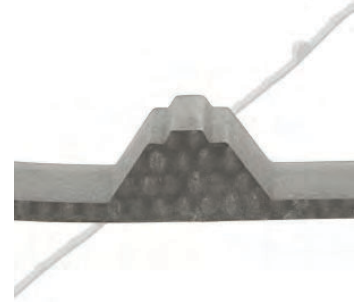
# Accessories



OUTSIDE FOAM SEALER



UNI-SEAL



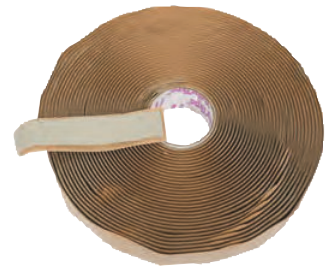
INSIDE FOAM SEALER



ROLLED VENT



BUTYL TAPE 3/8" X 45' ROLL



BUTYL TAPE 1" X 45' ROLL



LP VENT

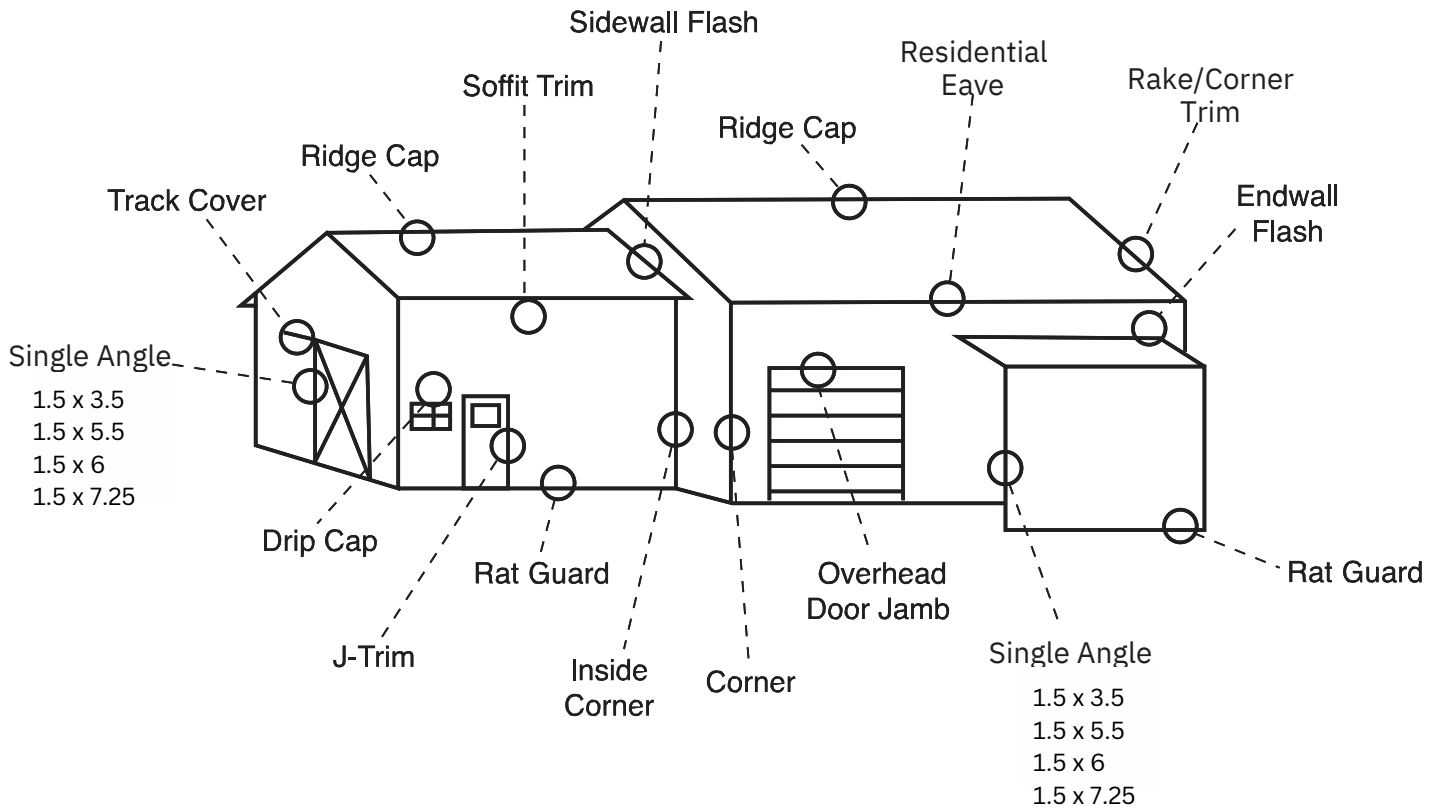


EVERSEAL ADHESIVE SEALANT



SOLAR SEAL  
COLOR MATCHED CAULK

# Trim Placement Chart







# 24 Hour Jobsite Delivery

*On-Site Damage Free, Fast Delivery!*

Ramco is founded and owned by a former contractor who knows what kind of problems a missed delivery will cause on the job site.

That's why we make it our personal mission to make sure your steel order is delivered on time.

- ✓ 24 Hour or less delivery
- ✓ Well Packaged Materials
- ✓ Damage Free
- ✓ Properly Organized When Delivered

# UL Listed

## RAMCO METAL PANELS ARE UL CERTIFIED

• • • FULL UL LISTING AND COMPLIANCE • • •

EXPERIENCE THE BENEFITS OF THIRD PARTY CERTIFICATION  
FROM THE BEST KNOWN INDEPENDENT PRODUCT CERTIFICATION ORGANIZATION  
THAT PERFORM UNANNOUNCED ON-SITE INSPECTIONS



*ALL METAL PANELS MANUFACTURED BY RAMCO ARE UL CERTIFIED*

U.L. (Underwriters Laboratories) is an independent, not-for-profit product safety testing and certification organization, founded in 1894. Over the last century, Underwriters Laboratories has become the world's best known independent product safety certification organization. Millions of products and their components are tested to UL's rigorous safety standards.

Underwriters Laboratories publishes a list stating the product has been tested to and complies with the applicable Standard. Underwriters Laboratories also maintains quarterly inspections to assure production of the listed products are in accordance with the listing. Having UL Listing guarantees that the product fully complies with each and every one of UL's requirements in the applicable Standard, and the manufacturer's product can then bear the UL Mark.

The UL listing is called a "Third Party Certification" providing an unbiased safety assurance to interested parties including the manufacturer, the specifier, and the consumer. UL's field reps worldwide conduct periodic, unannounced on site inspections of UL-certified products in the manufacturer's factory. The product is verified as being fully compliant with the set of rules governing the product.



**UL CERTIFIED GUARANTEES CONFIDENCE IN QUALITY AND DURABILITY**  
Visit [www.ul.com](http://www.ul.com) certification directory to see our listing R38846











### ROCHESTER

4572 N Old US Highway 31  
Rochester, Indiana 46975  
877-889-7802

### WOODBURN

22822 Roemer Drive  
Woodburn, Indiana 46797  
844-435-0598

### MIDDLEBURY

53117 IN-13  
Middlebury, Indiana 46540  
800-575-1713

[www.ramcosupply.com](http://www.ramcosupply.com)